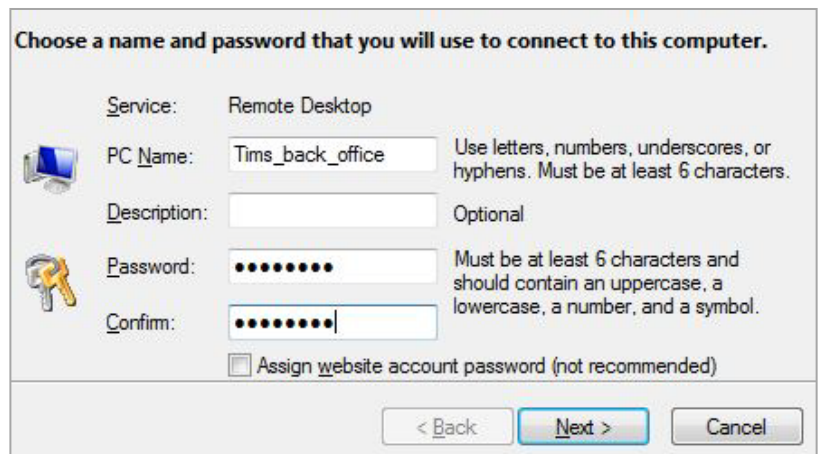


In order to access another PC remotely, the remote computer must be initially set up for use on eBLVD. Here's how to do it:

INITIAL SETUP

1. From the computer to be set up as the remote computer, sign in to <http://www.eBLVD.com>, which will take you to the Installed Host PCs page. *First-time users may be prompted to install a browser Add-on.*
2. Click the "Set Up This PC", then "Download Now" buttons from the left-hand side of the page. You will Save, then Run this applet.
3. Perform the 60-second Setup:
 - a. Accept the Agreement by clicking "I Accept";
 - b. Sign in so we know which account to associate this host to. Use your account credentials (username and password);
 - c. Enter a name and a password for this computer. Take the default, or enter a more descriptive name, such as "Tims_back_office". Next, either create a new password, or select the bottom radio button to assign the website password to this computer. You'll use this password for unattended access. Click Next;
 - d. Accept the default destination (or click Browse to change where you'd like to install the applet) and click Next;
 - e. Upon completion, click Finish.



Choose a name and password that you will use to connect to this computer.

Service: Remote Desktop

PC Name: Tims_back_office Use letters, numbers, underscores, or hyphens. Must be at least 6 characters.

Description: Optional

Password: Must be at least 6 characters and should contain an uppercase, a lowercase, a number, and a symbol.

Confirm:

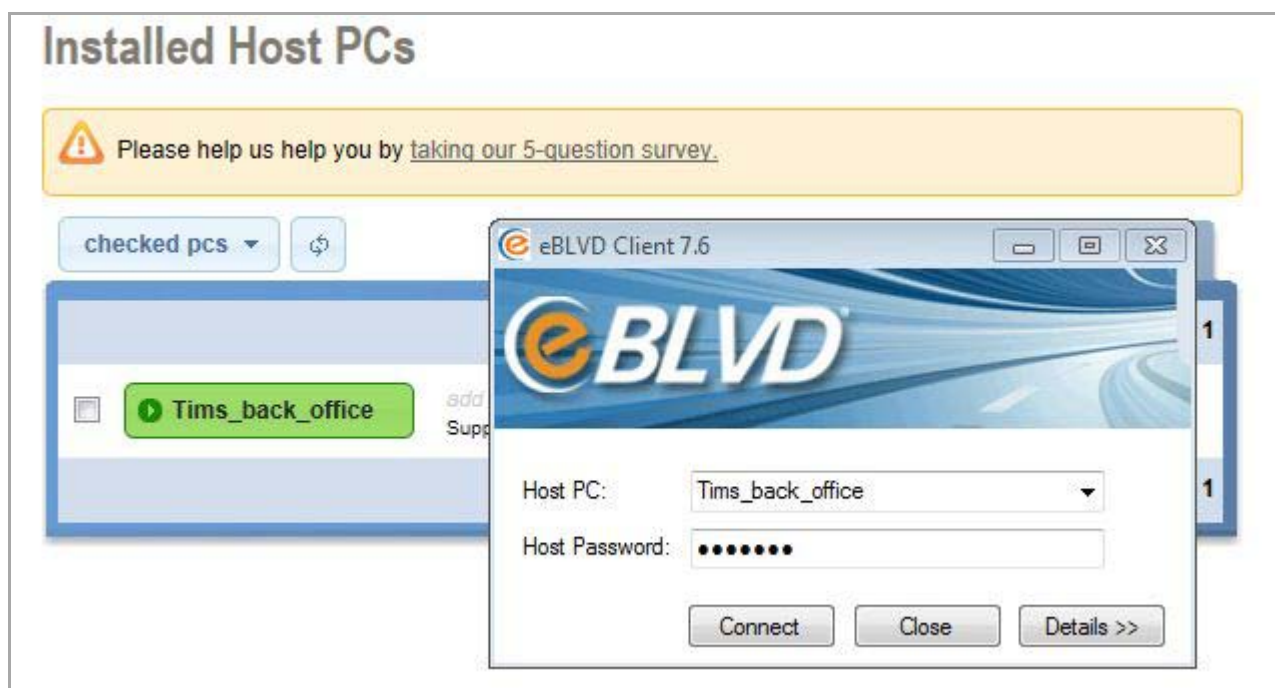
Assign website account password (not recommended)

< Back Next > Cancel

Once a PC is set up as a Host PC, it will be listed on your Installed Host PCs page each time you sign in.

ACCESSING A HOST COMPUTER

1. Log in to <http://www.eBLVD.com>, and access the Installed Host PCs page. **First-time users may be prompted to download the eBLVD Add-on. The eBLVD Add-on allows our web site to interact to your PC(s).*
2. Click the GREEN button to the left of the Host that you want to remotely access. This will invoke the eBLVD client viewer.




- If the password is known, enter it here and click the “Connect” button. The Host PC desktop will be displayed.
 - If you leave the password blank, the connection will be made, but a permission dialog box will be displayed on the Host computer. Only when the person at the Host computer clicks “Grant” will the Host desktop be broadcast.
3. When connected to a Host computer, mouse/keyboard, file transfer, and session recording permissions are enabled by default – regardless of whether a password was used to connect. *(These permissions can*

be changed from eBLVD Options -> Permissions tab.) The eBLVD Viewer toolbar contains buttons to perform these functions.



Note: not all platforms support full remote keyboard and mouse control, file transfer, and session recording. If you need these functions, connect from a Windows computer.

4. To end the remote session, click the red 'X' in the toolbar, or at the top corner of the eBLVD Client window.

To stop the eBLVD Host software, click the eBLVD System Tray icon,  select eBLVD Options, and choose the 'Stop eBLVD Host software' option. Any open remote session will be terminated, and the eBLVD icon will be removed from the System Tray. To restart the software, click the Windows Start button -> All Programs -> eBLVD -> eBLVD Options -> Start Host.